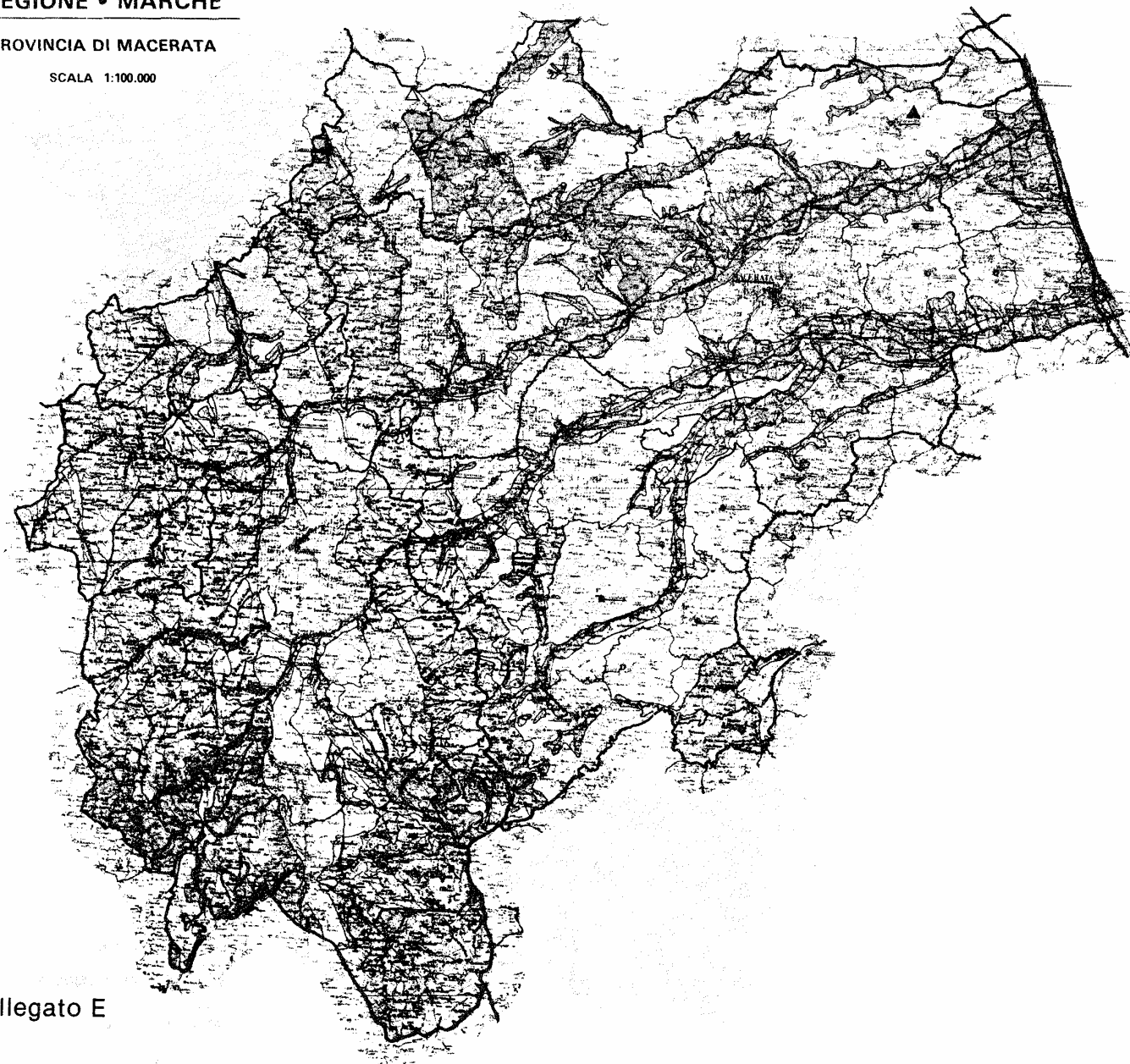


REGIONE • MARCHE

PROVINCIA DI MACERATA







SCALA 1:100.000

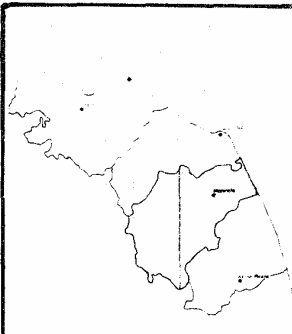


NORD



— LEGENDA —

-  AREE IDONEE PER L'UBICAZIONE DI DISCARICHE CONTROLLATE
-  AREE NON IDONEE PER L'UBICAZIONE DI DISCARICHE CONTROLLATE
-  AREE DI SMALTIMENTO PROPOSTE
-  ZONE PROPOSTE PER L'UBICAZIONE DI DISCARICHE CONTROLLATE
-  DISCARICHE CONTROLLATE ESISTENTI
-  DISCARICHE CONTROLLATE IN PROGETTO



REGIONE MARCHE
PIANO REGIONALE SMALTIMENTO RIFIUTI SOLIDI

Snamprogetti
SOLUZIONE A "BREVE TERMINE" DI SMALTIMENTO DEI RIFIUTI SOLIDI URBANI E DEI FANGHI CIVILI E INDUSTRIALI
PROVINCIA DI MACERATA

COMM. 543500	NO. 100	1:100.000	1985	PROGETTO
53 V. GP. A. 84214				

Allegato E